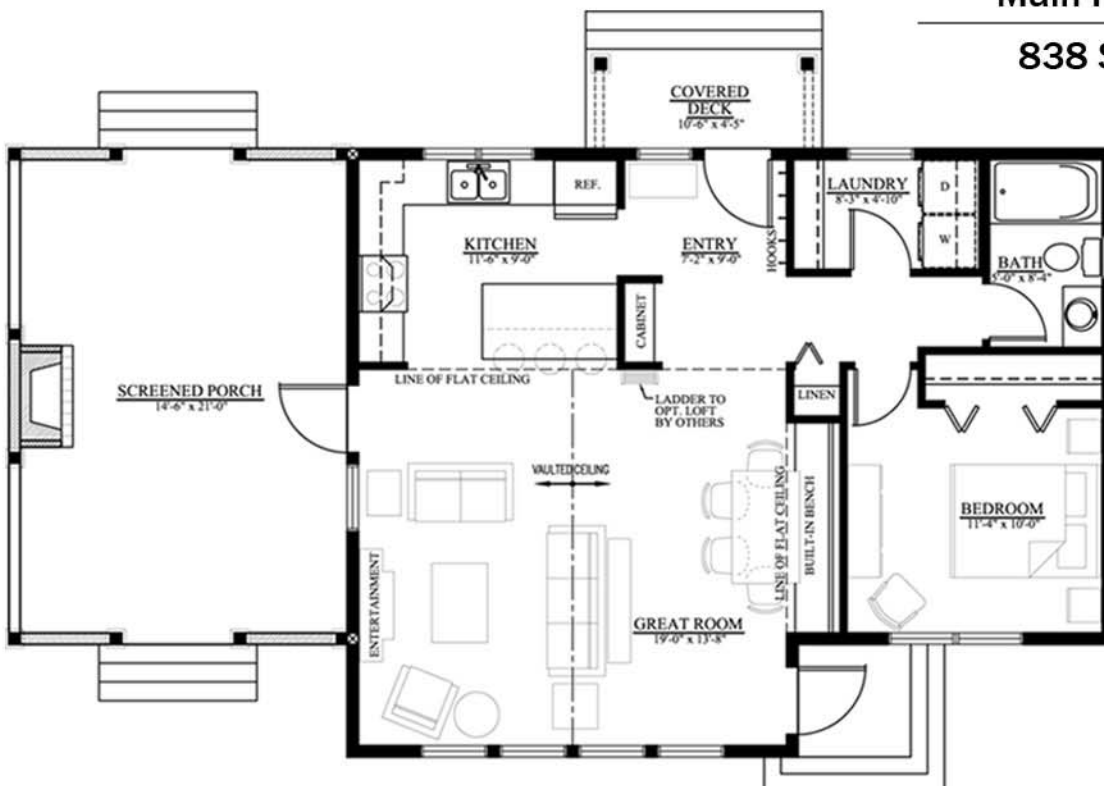


The Giscome



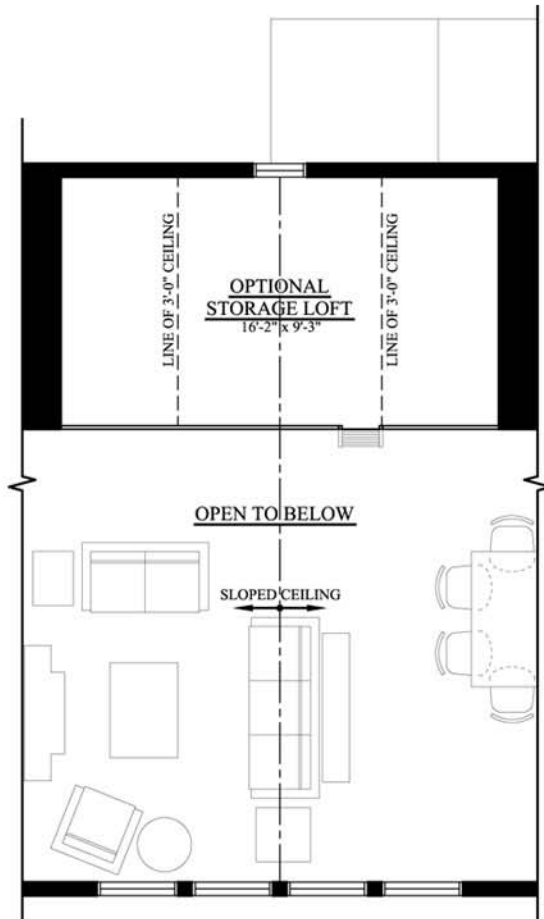
Main Floor Plan

838 Sq. Feet



Total Sq. Feet: 1336
Covered Porch: 330 sq. ft
Width: 49'-0"
Depth: 31'-0"
Height: 17'-7 1/2" (top of ridge to U/S of floor system).

The Giscome



Storage Loft Floor Plan

158 Sq. Feet

Total Sq. Feet: 1336
Covered Porch: 330 sq. ft
Width: 49'-0"
Depth: 31'-0"
Height: 17'-7 1/2" (top of ridge to U/S of floor system.)